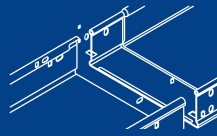


MADE IN  
BELGIUM



**THE·SNAP**  
BY TRAYCO



**UP TO  
10 TIMES  
FASTER**

**NEW**  
BY TRAYCO

# THE SNAP

THE NEW CLICKABLE CABLE TRAY



**QUICK ASSEMBLY**



**STRONG 'I- SHAPED' PROFILE**



**HIGHER CAPACITY**



**SAFE TO USE**

**Trayco**<sup>®</sup>  
MASTERS IN  
CABLE MANAGEMENT

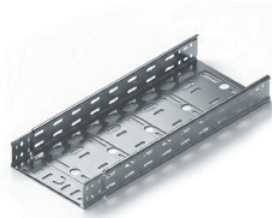
ENG

# THE SNAP

A smart cable tray system that clicks together in one simple movement. Thanks to its snap-fit design, installation is faster, cleaner, and more efficient. Ideal for projects where speed and a neat finish matter.



CTIC35



CTIC60



CTIC110



### Extra safe

The rolled edge ensures additional safety during installation and use.



### Stronger profile

The patented I-profile design makes the cable tray exceptionally robust.



### Fast installation

Fast coupling with integrated locking system allows trays to be connected in one click.



### Fire resistant (DIN 4102-12)

The fire-resistant design helps the system maintain its structural integrity in case of fire.

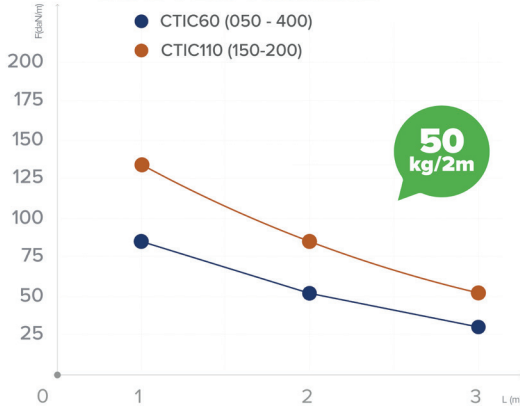


60



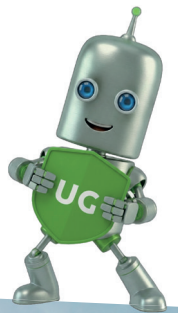
110

### LOAD PERFORMANCE



### ULTRA GALVA

A high-performant metallic coating which offers an optimum surface protection in a wide variety of aggressive and demanding environments, indoor as well as outdoor. The better alternative to hot-dip galvanizing. More environmentally friendly and more resistant.



Art	PG (Pre Galvanized)	UG	A	☒
CTIC60-100-07-3	21766	21804	100	3
CTIC60-150-07-3	21767	21805	150	3
CTIC60-200-07-3	21768	21806	200	3
CTIC60-300-07-3	21769	21807	300	3
CTIC60-400-10-3	21803	21808	400	3
CTIC110-100-07-3	21670	21834	100	3
CTIC110-150-07-3	21809	21812	150	3
CTIC110-200-07-3	21671	21813	200	3
CTIC110-300-10-3	21672	21814	300	3
CTIC110-400-10-3	21673	21815	400	3
CTNIC110-100-07-3	21836	21835	100	3
CTNIC110-150-07-3	21837	21825	150	3
CTNIC110-200-07-3	21838	21827	200	3
CTNIC110-300-10-3	21839	21828	300	3
CTNIC110-400-10-3	21840	21829	400	3
CTIC35		On demand		
CTIC85		On demand		