



**SOLAR**  
BY TRAYCO®

MADE IN  
BELGIUM

SUPERFAST AND  
FLEXIBLE SOLAR  
MOUNTING SOLUTIONS



FAST MOUNTING



SAFE TO USE



ECONOMICAL

UV  
AND  
WEATHER-  
PROOF

WITH A  
SIMPLE  
TWIST



**Trayco**®  
CABLE SUPPORT SYSTEMS

BEDRIJVENPARK COUPURE 5A • B-9700 OUDENAARDE  
T. +32(0)55 23 29 90 • WWW.TRAYCO.EU



# ONE SUPPORT, TOP FLEXIBILITY

With THE · CUBE by Trayco® one installs cable support systems quickly and safely on flat roofs. Thanks to its weight (1 kg) you do not need to fix the roof support on the surface. Wire trays are being installed in no time, without accessories. Or you opt for the clippable fixation plate upon which two trajectories can be mounted at the same time. Time savings guaranteed.

CUBE-SQ-110-PE (70 x 110 x 110 mm) With round head bolt and fixation plate



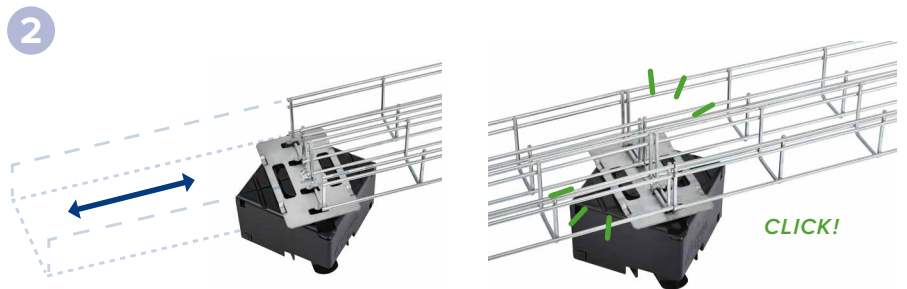
CURIOUS ABOUT THE INSTALLATION OPTIONS? HAVE A LOOK AT THE **INSTRUCTION VIDEO**



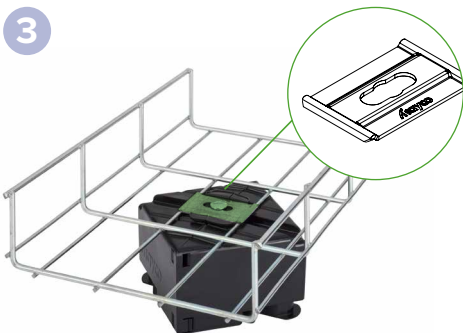
## NOTHING BUT BENEFITS



Mounting with a **single turn**.  
No bolts or nuts required.



Coupling of various mesh trays by means of **clippable fixation plate**.  
CUBE-FP-MTL60-050-UG.



Mounting with **fixation plate** MT-FB-UG.



To mount **cable ladders** and **mesh trays**.

Trayco® also offers an extensive range of support systems and accessories for fast and project-based installation of solar installations, fully compatible with THE · CUBE, finished in Ultra Galva.

